

# NETGEAR MR314

Routeur Adsl/cable

Switch 4 ports 10/100

Point de presence WI-FI

Dans un boîtier métallique de bonne qualité, il est beau mon AP



La mise en route est assez simple il suffit de branché le petit transfo et après une période de 10 s environ, l'AP est vu par tous les clients présents.

Le panneau arrière est simple et presque complet, une prise RS 232 pour la Console comme sur la majorités des routeurs m'aurait plus.



L'antenne repliable est aussi amovible après ouverture



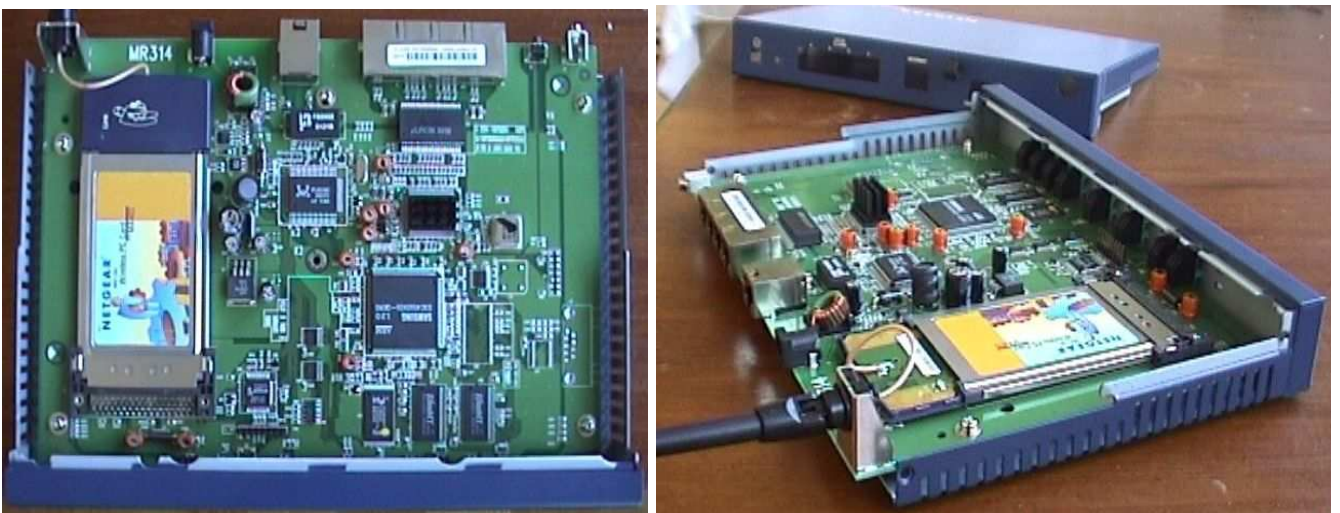
Deux vis de chaque cotés

Deux de moins

le couvercle glisse vers l'arrière, l'antenne reste en place



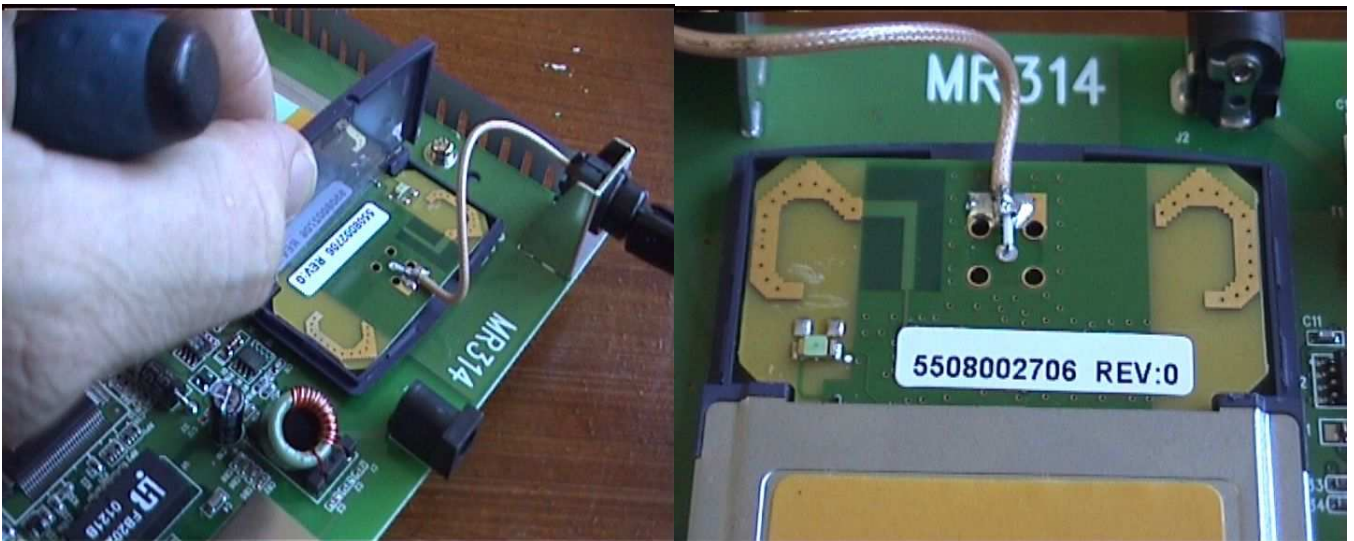
Pas de surprise, une carte de chez Netgear dedans, attention elle est coller en dessous ( genre double face épais )



Le capot de la carte s'enlève sans problème avec un petit tournevis plat



Un mini coax souder sur l'antenne interne



si vous tournez l'antenne vers le bas elle sort toute seule et vous pourrez la resouder pour revendre l'AP par exemple.



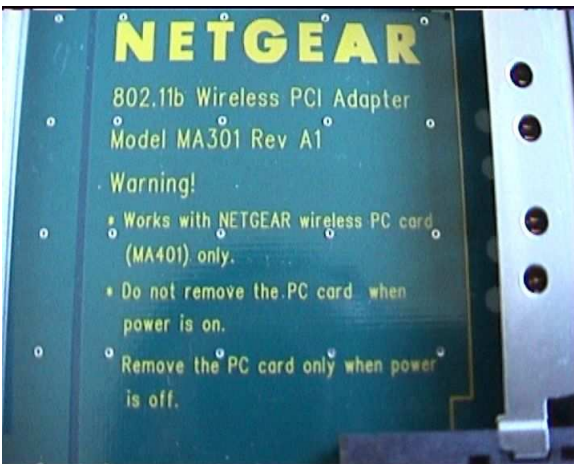
L'adaptateur PCI de NETGEAR



Détail du chip.

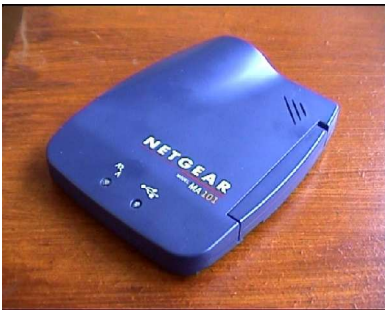


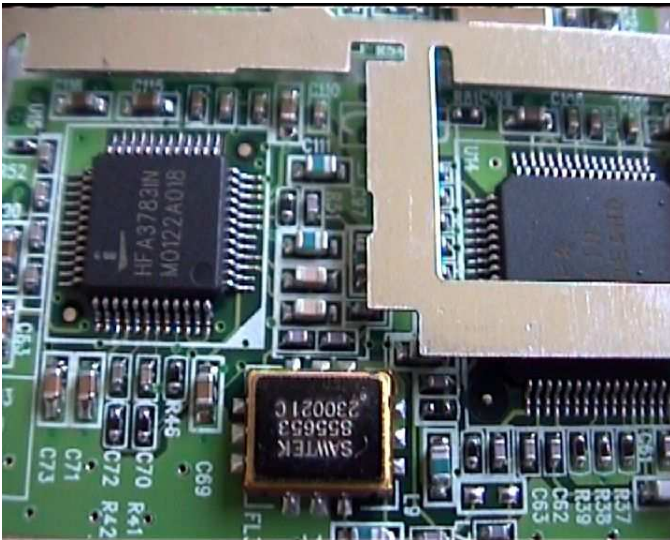
Détail de la mise garde.



A vérifier avec une autre carte.

Enfin l'adaptateur USB





Donc pas de carte à l'intérieur !!

Bonus +

Le soft http



MAIN MENU

LOGOUT

### WIZARD SETUP

#### General Setup :

This information is optional, but may be helpful in accessing services of your Internet Service Provider, such as mail and news servers and customer support web pages.

Enter the System Name (may be called Host Name or Account Name) that is assigned to you by your Internet Service Provider.

System Name :

The ISP's Domain Name is often sent automatically by the ISP to the router. If you are having difficulty accessing ISP services, you may need to enter the Domain Name manually in the box below.

For example, if the full address of your ISP's mail server is : **mail.xxxx.yyyy.myisp.com**, then the Domain Name is **xxxx.yyyy.myisp.com**

Domain Name :

Next

Status: Ready



MAIN MENU

ADVANCED SYSTEM LAN WIRELESS PORTS STATIC ROUTE CONTENT FILTER

LOGOUT

### WIRELESS LAN SETUP

Setup **Access Filter**

#### Wireless LAN Setup

ESSID

Channel

RTS Threshold  Default  (0 ~ 2432)

Fragment Threshold  Default  (256 ~ 2432)

WEP Encryption

#### WEP Key Generator

Passphrase

#### Web Manual Entry

64-bit WEP: Enter 10 characters ("0-9", "A-F") for each Key(1-4).  
128-bit WEP: Enter 26 characters ("0-9", "A-F") for each Key(1-4).

- Key 1
- Key 2
- Key 3
- Key 4

Apply

Cancel

Fonction DYNDNS intégré



MAIN MENU

ADVANCED

SYSTEM

LAN

WIRELESS

PORTS

STATIC ROUTE

CONTENT FILTER

LOGOUT

## DYNAMIC DNS

**System**   DDNS   **Password**

---

Active

Service Provider: WWW.DynDNS.ORG

Host Name:

E-mail Address:

User:

Password:

Enable Wildcard

Apply   Cancel



MAIN MENU

ADVANCED

SYSTEM

LAN

WIRELESS

PORTS

STATIC ROUTE

CONTENT FILTER

LOGOUT

## LAN SETUP

**IP**

---

DHCP Setup

DHCP Server

Pool Starting Address:    Count: 32

Primary DNS Server:

Secondary DNS Server:

---

LAN TCP/IP

IP Address:    RIP Direction: Both

IP Subnet Mask:    RIP Version: RIP-1

Multicast: None

Apply   Cancel

Upgrade du firmware



[MAIN MENU](#)[MAINTENANCE](#)[SYSTEM STATUS](#)[DHCP TABLE](#)[UPGRADE](#)[FILE](#)[LOGOUT](#)

## SOFTWARE UPGRADE

To upgrade the internal router software, browse to the location of the binary (.BIN) upgrade file and click UPLOAD. Upgrade files can be downloaded from Netgear's website. If the upgrade file is compressed (.ZIP file), you must first extract the binary (.BIN) file. In some cases, you may need to reconfigure the router after upgrading.

File Path :

Stell'

[stellartois@computers-guys.com](mailto:stellartois@computers-guys.com)